



Application Portfolio Management

Effectively manage and rationalize your application portfolio

Successful application portfolio management (APM) requires analytics and insight into the dependencies across the technical, business and strategic landscapes. iServer's application portfolio management solution lets you see how apps connect with business processes and their supporting technologies, make key rationalization decisions, and lower your operational IT costs.

Answer the fundamental questions with iServer's rich interactive dashboards



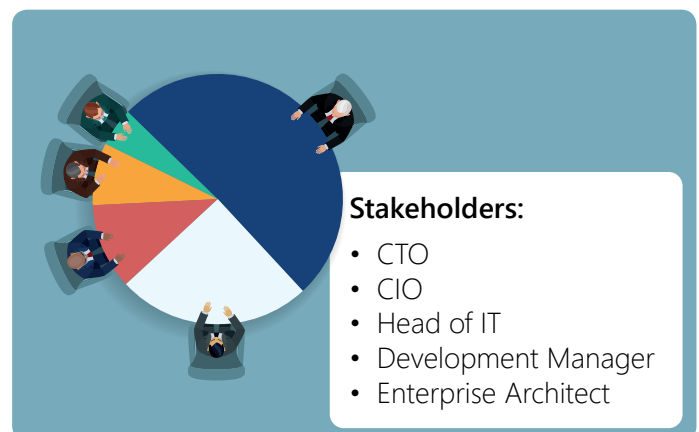
What are the consequences of a system failure?



Which applications support business critical capabilities?



Which applications in the current landscape overlap functions?



The APM dashboards are driven by predefined views in the iServer repository and rendered using Microsoft's Power BI.

Application Portfolio Management

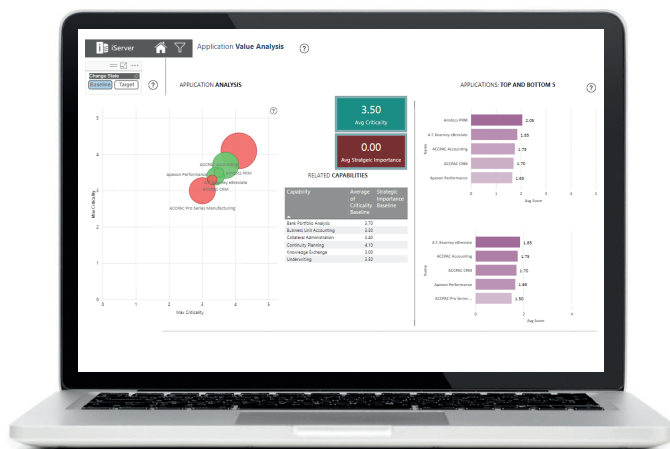
Application Risk Business Impact

Highlight at-risk applications and the impact on the business should they fail.



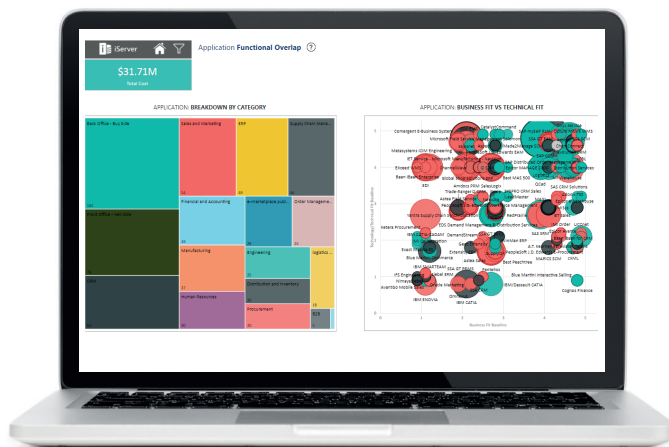
Application Value Analysis

Understand the value and strategic importance of different applications.



Application Functional Overlap

Compare applications which perform similar functions and identify those which need to be retired.



© Copyright 2019. All rights reserved.

enquiries@orbussoftware.com | www.orbussoftware.com

Seattle Software Ltd. Victoria House, 50-58 Victoria Road, Farnborough, Hampshire, GU14 7PG. T/A Orbus Software. Registered in England and Wales 5196435.