



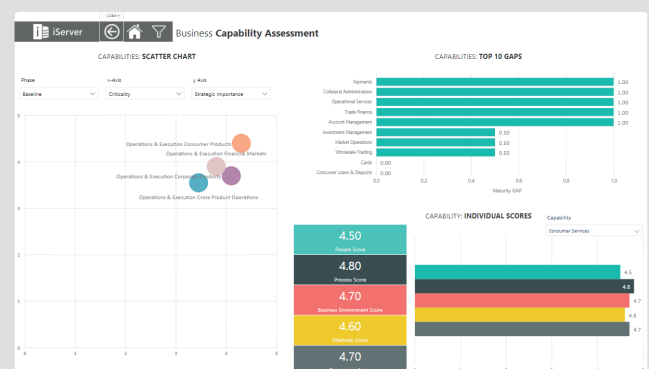
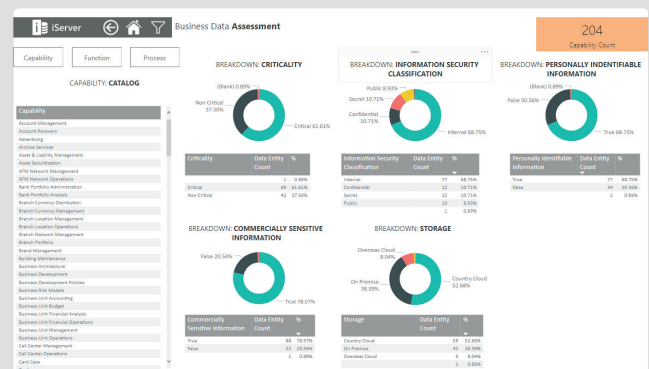
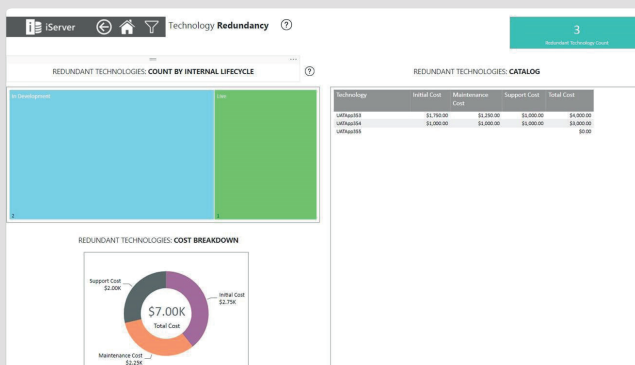
# iServer for Strategic Portfolio Management

## Manage, analyze and optimize your portfolios

iServer provides a world-class repository and tools for capturing and analyzing your enterprise blueprint. iServer for SPM accelerates your analysis with out-of-the-box repository views and dashboards that help you understand and optimize your organization's portfolios in line with corporate strategy.

### Rich, Interactive Dashboards Out-of-the-Box

Over 100 attractive, easy-to-navigate, interactive dashboards are available on demand, answering hundreds of key business questions for stakeholders and executives.

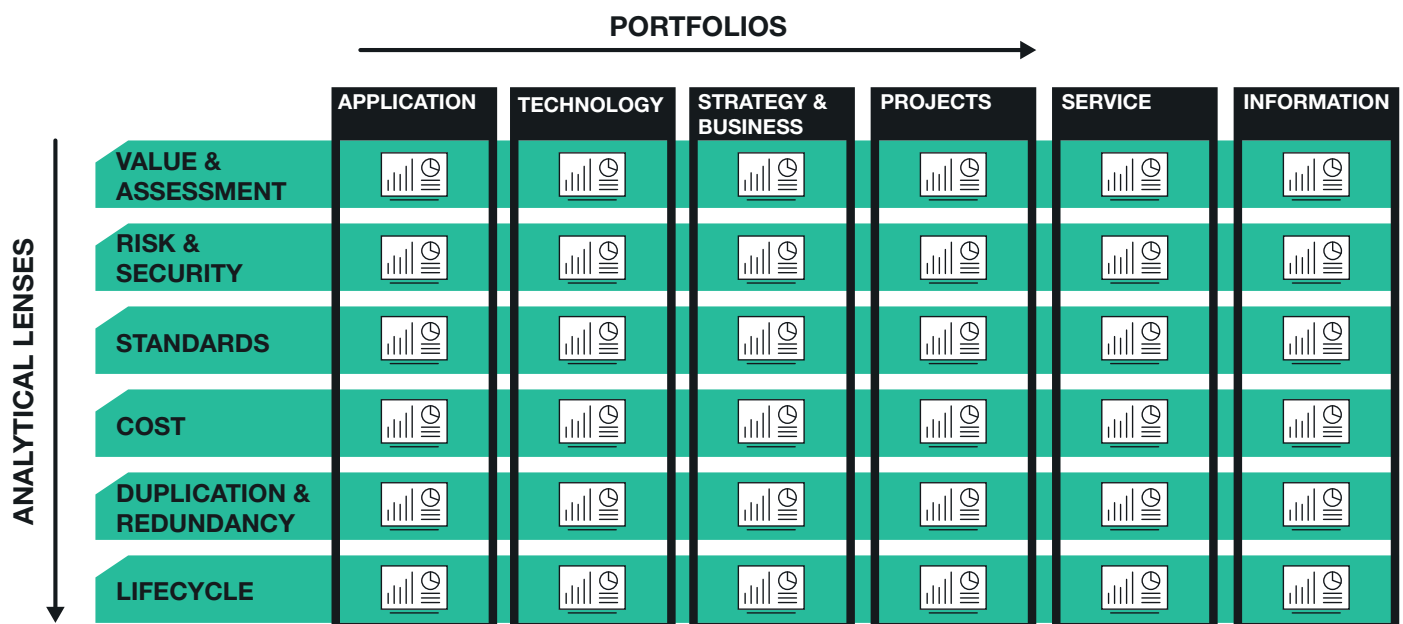


# iServer for Strategic Portfolio Management



## 360 Degree Analysis Across Portfolios

iServer's unique, preconfigured data model allows analysis of each portfolio from a range of perspectives, addressing different stakeholder concerns.



## Dashboards Presented in BI tools

The SPM dashboards are driven by predefined views in the iServer repository and rendered in the most commonly used Business Intelligence tools such as Microsoft's PowerBI, Tableau and Qlik.

## Application Portfolio

[illegible]

Govern proactively and optimize your  
Technology Portfolio to support the business.

The image shows a laptop screen displaying a 'Business Data Assessment' dashboard. The dashboard is organized into several sections:

- Top Navigation:** Includes icons for 'Server', 'Cloud', and 'Hybrid' environments, and a title 'Business Data Assessment'.
- Summary:** A top right box indicates '204 Capability Count'.
- Left Sidebar:** A 'CAPABILITY CATALOG' list with various categories like 'Application Development', 'Data Management', 'Security', etc.
- Main Content Area:** Six sections, each with a donut chart, a table of counts, and a table of percentages.
  - BREAKDOWN: CRITICALITY:**
    - Donut Chart: Green (81.25%), Red (18.75%)
    - Table:
 

Criticality	Count	Percentage
Non-Critical	17	8.33%
Critical	187	91.67%
  - BREAKDOWN: INFORMATION SECURITY CLASSIFICATION:**
    - Donut Chart: Green (61.76%), Red (38.24%)
    - Table:
 

Information Security Classification	Count	%
Secret	10	4.9%
Confidential	10	4.9%
Internal	10	4.9%
Public	173	84.3%
  - BREAKDOWN: PERSONALLY IDENTIFIABLE INFORMATION:**
    - Donut Chart: Green (95.1%), Red (4.9%)
    - Table:
 

Personally Identifiable Information	Count	%
Yes	24	11.76%
No	180	88.24%
  - BREAKDOWN: COMMERCIALLY SENSITIVE INFORMATION:**
    - Donut Chart: Green (76.47%), Red (23.53%)
    - Table:
 

Commercially Sensitive Information	Count	%
Yes	15	7.35%
No	189	92.65%
  - BREAKDOWN: STORAGE:**
    - Donut Chart: Green (80.95%), Red (19.05%)
    - Table:
 

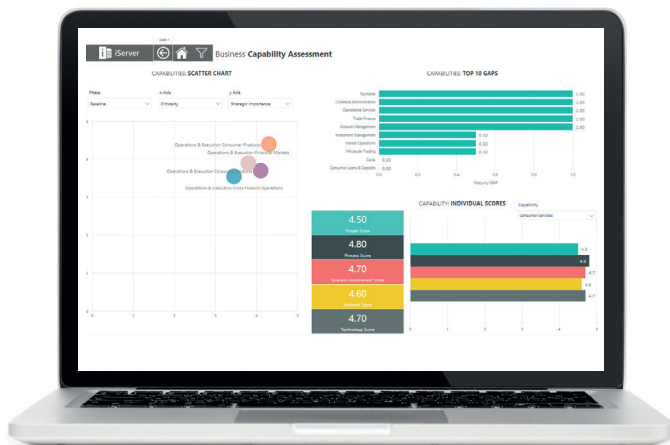
Storage	Count	%
Storage-Paid	8	3.92%
Storage-Free	18	8.82%
Storage-Paid	182	89.26%



# iServer for Strategic Portfolio Management



Easily navigate between your strategic portfolios to make smart decisions, fast.



## Project Portfolio

Prioritize the IT projects and programmes needed to deliver strategic change.

## Service Portfolio

Ensure Services are strategically managed and aligned with objectives, processes and functions.



## Information Portfolio

Govern data through understanding risk, access, and the nature of information created stored in your organization.

© Copyright 2019. All rights reserved.

[enquiries@orbussoftware.com](mailto:enquiries@orbussoftware.com) | [www.orbussoftware.com](http://www.orbussoftware.com)

Seattle Software Ltd, Victoria House, 50-58 Victoria Road, Farnborough, Hampshire, GU14 7PG. T/A Orbus Software. Registered in England and Wales 5196435.