

The Top 10 Factors to Consider When Selecting a TOGAF® 9 Repository



TOGAF® is a registered trademark of The Open Group in the United States and other countries.
All other trademarks are the property of their respective owners.

All sustainable TOGAF® 9 based Enterprise Architecture Practices must have a solid architecture repository

Current challenges in selecting a tools

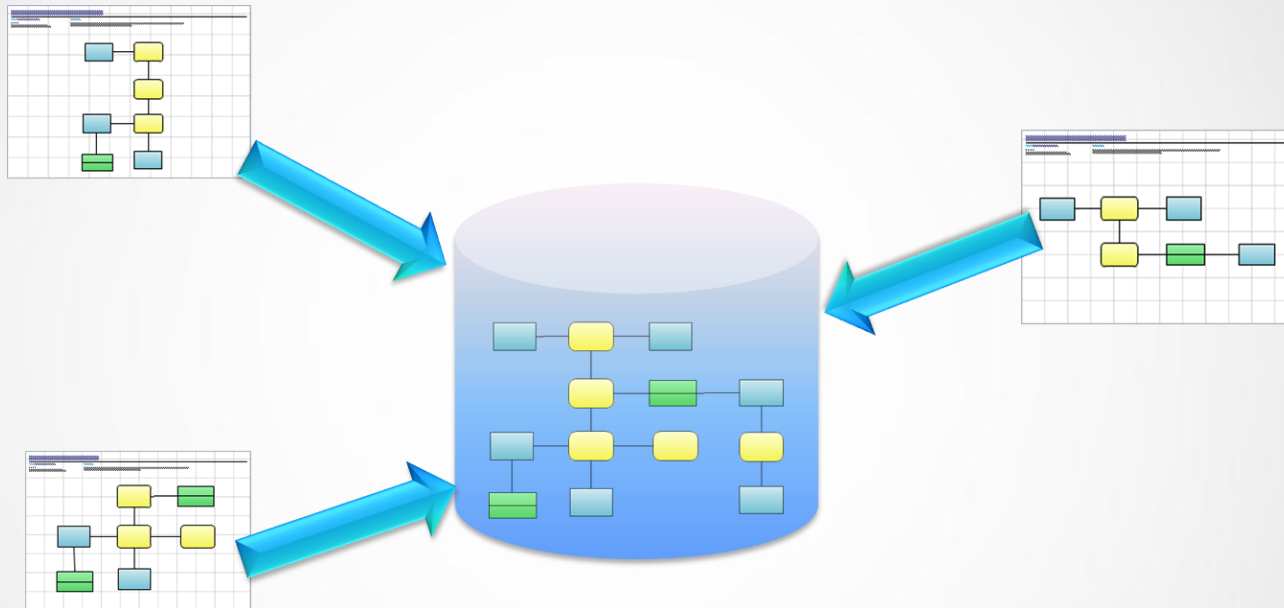
- No clear understanding on what is required by an architecture repository (Watch this space → Open Group have a workgroup tackling this issue!)
- Different projects / environments have different levels of maturity and need
- Vendors repackaged wide range of tools as EA Tools
 - Open Source Ontology tools
 - Data management tools
 - Business Intelligence tools
 - Business Process Management tools
 - UML Systems Modelling tools

10 Factors to consider before buying an EA tool

- Based on own project experience, professional feedback from peers and professionals EA's I trained over the last 8 years
- No Quadrant analysis or vendor lists used as input

1 It must be a real repository

A Central Enterprise Architecture Repository with the ability to extract different views of the information.

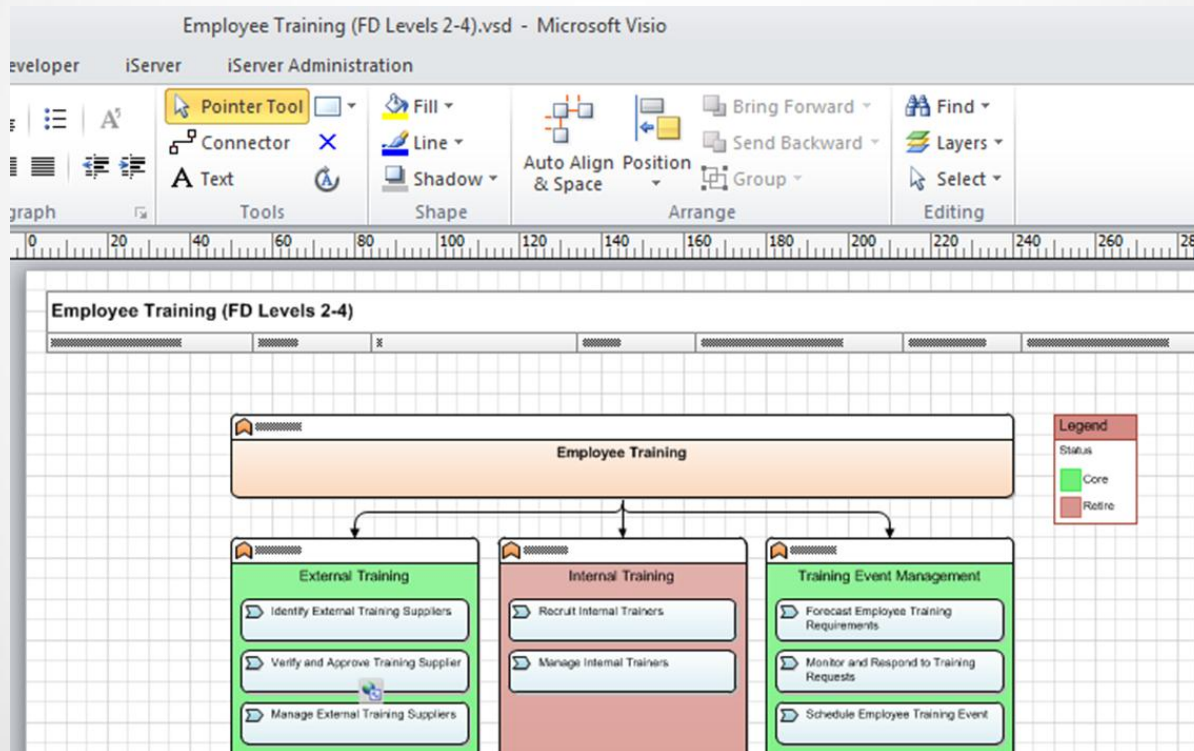


- More than just MS Visio diagrams
- Models shared with the rest of the team
- Ability to re-use the models on multiple views and projects
- Ability to access the data (or building blocks in TOGAF® terminology) without being forced to use the modeling front-end

3 It must have an intuitive User interface

Any tool that I use on a project must be able to either:

- use Visio
- import Visio diagrams and map it to my custom meta-model
- visually look like Visio



4 Out-of-the-box TOGAF® 9 Support is required

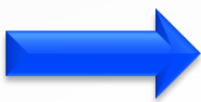
The TOGAF® 9 Architecture Development Method allows me to define a set of Viewpoints at the start of the project, which I can confirm with stakeholders and distribute to the architects and modelers to create, with a predictable, consistent result at the end.

The screenshot shows a software interface with a tree view on the left and a list of diagram types on the right. The tree view is titled 'Architecture Repository' and includes folders for 'Architecture Landscape', 'Architecture Capability', 'Architecture Metamodel', 'Governance Log', 'Reference Library', 'Standards Information Base', and 'Enterprise Continuum'. The 'Reference Library' folder is expanded to show sub-folders for 'Application Architecture', 'Business Architecture', 'D. Technology Architecture', and 'Data Architecture'. The 'Standards Information Base' folder is also expanded to show 'Business Standards', 'Data Standards', 'Application Standards', and 'Technology Standards'. The 'Enterprise Continuum' folder is expanded to show 'Architecture Continuum' and 'Solutions Continuum'. The list of diagram types on the right includes: BPMN 1.2 Diagram, T9 B Business Footprint Diagram, T9 B Business Service - Information Diagram, T9 B Business Use-Case Diagram, T9 B Event Diagram, T9 B Functional Decomposition Diagram, T9 B Goal - Objective - Service Diagram, T9 B Organization Decomposition Diagram, T9 B Process Flow Diagram, and T9 B Product Lifecycle Diagram. Below the list is a table with a 'Desc' column containing various TOGAF 9 relationship types such as 'TOGAF: Actor performs task in Role', 'TOGAF: Actor resolves Event', 'TOGAF: Actor supplies Data Entity', 'TOGAF: Business Service is realized through IS Service', 'TOGAF: Contract governs and measures Service', 'TOGAF: Contract meets Service Quality', 'TOGAF: Control ensures correct operation of Process', 'TOGAF: Data Entity constitutes Data Entity', 'TOGAF: Data Entity is processed by Logical Application Component', 'TOGAF: Data Entity relates to Data Entity', 'TOGAF: Driver constitutes Driver', 'TOGAF: Driver creates Goal', 'TOGAF: Driver motivates Organization Unit', 'TOGAF: Function communicates with Function', 'TOGAF: Function constitutes Function', 'TOGAF: Function is bounded by Service', and 'TOGAF: Function is realized by Process'.

5 It must be easy to load data in bulk

The modeling tool must be able to import excel spread sheet data.

	B	C	D
1	Name	Object Type	Name
2	Accounts	Organization Unit	Accounts
3	Bank Accounts	Organization Unit	Bank Accounts
4	Consumer Banking	Organization Unit	Consumer Banking
5	Corporate Banking	Organization Unit	Corporate Banking
6	Domestic	Organization Unit	Domestic
7	Facilities	Organization Unit	Facilities
8	Finance & Admin Department	Organization Unit	Finance & Admin Department



	B	C	D
1	Name	Object Type	Name
2	Employee Compensation	Function	Employee Compensation
3	Employee Training	Function	Employee Training
4	IT Provision	Function	IT Provision
5	Recruitment	Function	Recruitment



	A	B	C
1	Name	Object Type	Name
2	Application Development	Service	Application Development
3	Expense Payments	Service	Expense Payments
4	Infrastructure Management	Service	Infrastructure Management
5	Staff Policies	Service	Staff Policies
6	Staff Recruitment	Service	Staff Recruitment
7	Staff Training	Service	Staff Training

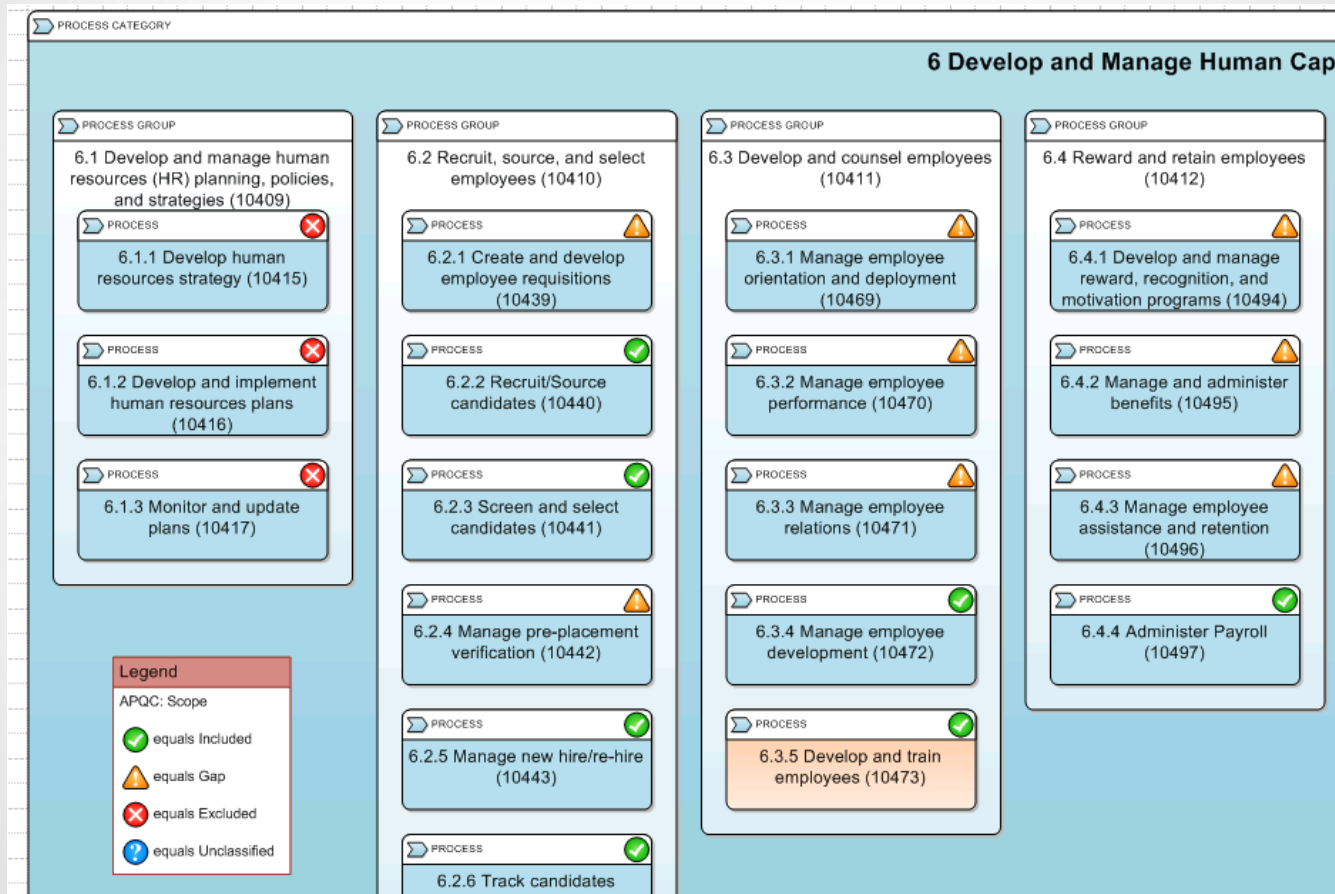


Name	Object Type			
Accounts	Organization Unit			
Achieve utilisation of IT estate	Goal			
Application Development	Service			
Bank Accounts	Organization Unit			
Consumer Banking	Organization Unit			
Corporate Banking	Organization Unit			
Cost saving	Driver			
Domestic	Organization Unit			
Employee Compensation	Function			
Employee Training	Function			
Expense Payments	Service			
Facilities	Organization Unit			
Finance & Admin Department	Organization Unit			
Financial Markets	Organization Unit			
Financial Markets Team	Organization Unit			
Human Resources Department	Organization Unit			
Infrastructure Management	Service			
International	Organization Unit			
Investment Dept	Organization Unit			
IT Provision	Function			
Legal	Organization Unit			
Leverage existing internal infrastructure	Driver			
Payroll Services	Service			
Procurement	Service			
Property Accounts	Organization Unit			
Recruitment	Function			
Reduce administrative costs by 10% in 2 years	Goal			
Reduce administrative staff headcount by 5%	Goal			
Reduce staff headcount	Driver			
Risk Management	Organization Unit			
Staff Policies	Service			
Staff Recruitment	Service			
Staff Training	Service			

Manually creating over 700 application & 300 process objects by hand and then linking them is not fun!

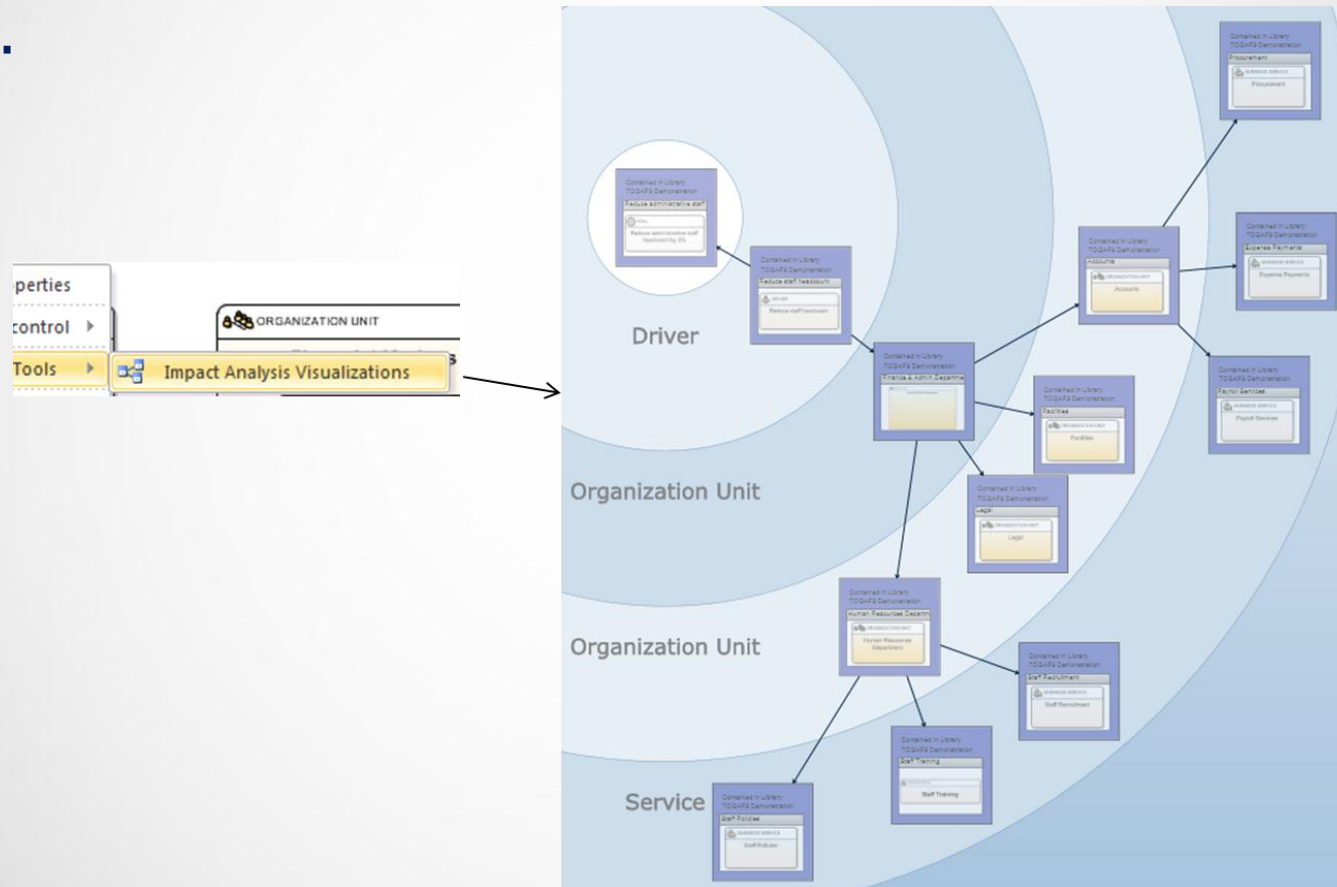
6 Visualisation must be varied, accessible and stunning

Build visualizations for the stakeholders of the repository, who need to make key decisions using information from the repository.



7 It must have native support for data analysis

I will not buy or implement a tool in the future that does not give me the capability to dynamically interact with the repository and perform data analysis on objects.



8 It must have technical integrity tools and reporting

Users must believe the data is accurate and consistent and it must be readily available.



- Information quality and the consistency of the repository must be reviewed on a regular basis by performing **technical quality assurance**
- **Logical quality assurance** is a human function and although I would have loved to embed an Artificial Intelligence module into the repository to do the checking, it is still a role that has to be performed by someone on the Enterprise Architecture team

9 Technical team must use familiar infrastructure

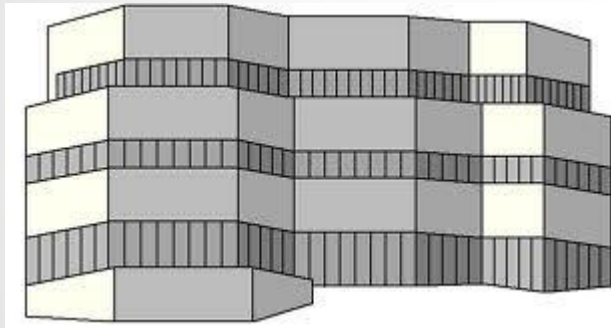
Pick technology that your internal support staff are comfortable with, i.e. if you are using SQL Server and Windows Server in your data centre then pick a tool with those technology components.



10 Vendor support must be credible

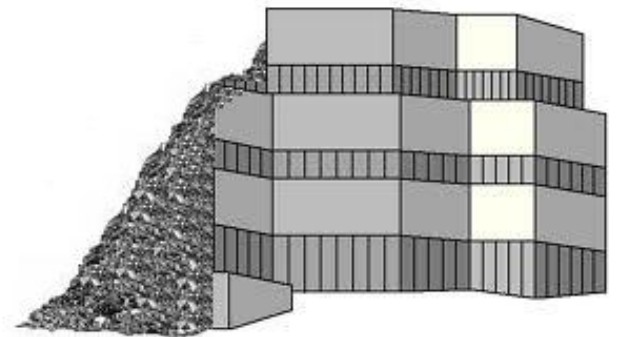
Maintaining and supporting an Enterprise Architecture Repository is a serious on-going business.

Vendor Supported Architecture Repository Software



- ✓ Vendor with local skills
- ✓ Roadmap with regular upgrades
- ✓ Support contract

Unsupported Architecture Repository Software



- ✓ “Leader” in the market without local references
- ✓ No support contract
- ✓ No local skills / experience on the software
- ✓ “community edition”
- ✓ D.I.Y. repository

Questions and Answers



Download this Presentation and White Paper from:

(<http://orbussoftware.com/downloads/>)



Visio Starter Packs (TOGAF[®]/ArchiMate/BPMN):

(<http://orbussoftware.com/downloads/>)