

What Are The Biggest Drivers For **Enterprise Architecture**



Application Rationalization

What is it?

Most enterprises use hundreds of applications in their day to day operations, without thinking about the cost of maintenance.

Application Rationalization aims to identify unnecessary applications, save money and improve efficiency.

Why is this a part of Enterprise Architecture?

- Architects have knowledge of all applications through application portfolio management.
- Pre-defined scoring, methodologies and surveys make it easy to assess applications.
- Easily combined with application roadmap to manage digital change.



Application & Technology Roadmapping

What is it?

Roadmapping is the process of planning out how technologies or applications will develop over a time period. Roadmaps communicate and influence digital transformation, providing surety in uncertain times.

Why is this a part of Enterprise Architecture?

- Tracking of lifecycle data to determine when technologies need to be replaced.
- Easy to gather Stakeholder input through the central repository.
- TOGAF reference model provides method of linking logical and physical components

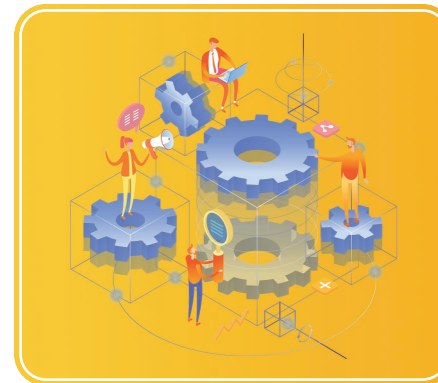
Business Capability Management

What is it?

Business Capabilities are essentially what a business does, with business capability models representing the firm at an abstract level. This can then be used to drive investment, strategy and other decision making

Why is this a part of Enterprise Architecture?

- Architects have the ability to view the entire firm and its actions through the central repository.
- Capability Assessments are easily conducted through EA tools.
- Models can be linked to other parts of the enterprise architecture to provide traceability and greater understanding of the source of capabilities.



Business Strategy Modeling

What is it?

A business strategy model is a visual representation of a strategy, for example a SWOT analysis laid out on a grid. Strategy Modeling provides clarity over the enterprise, while ensuring collaboration between disparate teams and improving the strategy function.

Why is this a part of Enterprise Architecture?

- The central repository model ensures linkages across all elements involved in strategy modeling.
- Better communication between IT teams and the overall strategic direction.
- Standard Visualizations and viewpoints are provided by EA tools.

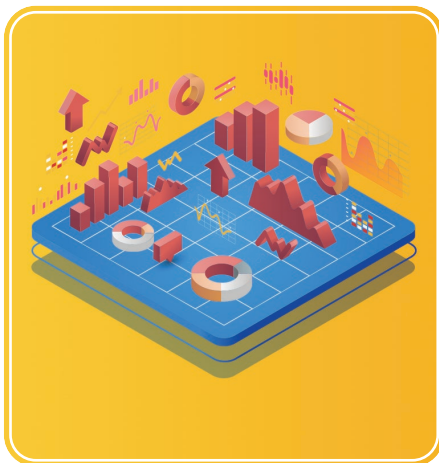
Conceptual & Logical Data Modeling

What is it?

Data models inform an organization of the structure of their data flows, ensuring all objects are accurately represented. This enables firms to make data driven decisions with confidence, and align IT programs and information assets with business strategy.

Why is this a part of Enterprise Architecture?

- The data environments needed to construct accurate models fit well under enterprise architecture.
- UML and other data modeling standards are fully supported by EA tools such as iServer.
- Communicating and socializing data models is easily done through the central repository and communication tools of iServer.



Integration Architecture

What is it?

Enterprises may use hundreds of applications, many of which need to be able to communicate and share data. In order to accomplish this, enterprises need an Integration Architecture to facilitate connections. This breaks down data siloes and ensures critical data flows survive.

Why is this a part of Enterprise Architecture?

- Only architects have enough vision over the enterprise's applications and data flows to deliver good integration.
- IT architecture can be aligned to the overall business strategy.
- Ready-to-use templates and architecture views provide unparalleled understanding.

Standardized Process Modeling

What is it?

Process Modeling is the action of creating models to represent the business processes of a firm. For these to be useful, models should be standardized, with a familiar notation and design that can be easily communicated to stakeholders.

Why is this a part of Enterprise Architecture?

- The BPMN notation offers standard modeling designs and concepts.
- EA tools enable dynamic, real time process models to be created and visualized.
- Data from the central repository enables models to be swiftly created and updated.



Technology-Business Impact Analysis

What is it?

Enterprises need to know how a change will impact upon them before the change happens. To accomplish this, they turn to impact analysis. Business Impact Analysis is concerned with ensuring business continuity, and managing digital transformation to minimize disruption.

Why is this a part of Enterprise Architecture?

- EA is all about managing digital transformation - which means knowing how changes will impact on a firm.
- Visibility over the whole enterprise gives architects the ability to assess every angle of a change.
- The central repository makes linkages between components clear, revealing otherwise hidden impacts.



© Copyright 2020 Orbus Software. All rights reserved.

No part of this publication may be reproduced, resold, stored in a retrieval system, or distributed in any form or by any means, electronic, mechanical, photocopying, recording, or otherwise, without the prior permission of the copyright owner.

Such requests for permission or any other comments relating to the material contained in this document may be submitted to: marketing@orbussoftware.com

Orbus Software

Floor 4, 60 Buckingham Palace Road, SW1W 0RR

+44 (0) 20 3824 2907

enquiries@orbussoftware.com

www.orbussoftware.com